

DTC	P1127	ETCS Actuator Power Source Circuit Malfunction
------------	--------------	-------------------------------------------------------

CIRCUIT DESCRIPTION

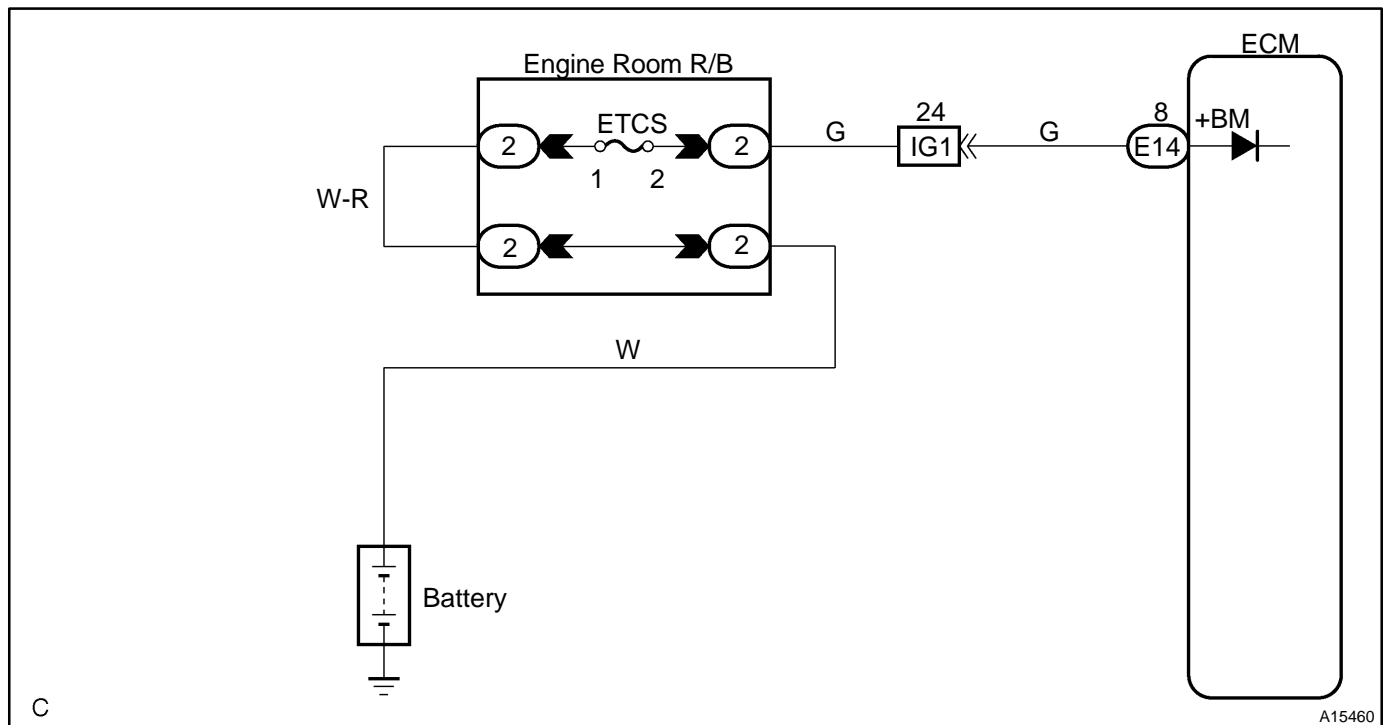
Battery positive voltage is supplied to terminal +BM of the ECM even once when the ignition switch is OFF for the electric ETCS control system.

If this DTC is stored, the ECM shuts down the power for the ETCS motor and the magnetic clutch, and the ETCS valve is fully closed by the return spring.

However, the opening angle of the ETCS valve can be controlled by the accelerator pedal through the ETCS cable.

DTC No.	DTC Detecting Condition	Trouble Area
P1127	Open in ETCS power source circuit	<ul style="list-style-type: none"> • Open in ETCS power source circuit • ECM

WIRING DIAGRAM

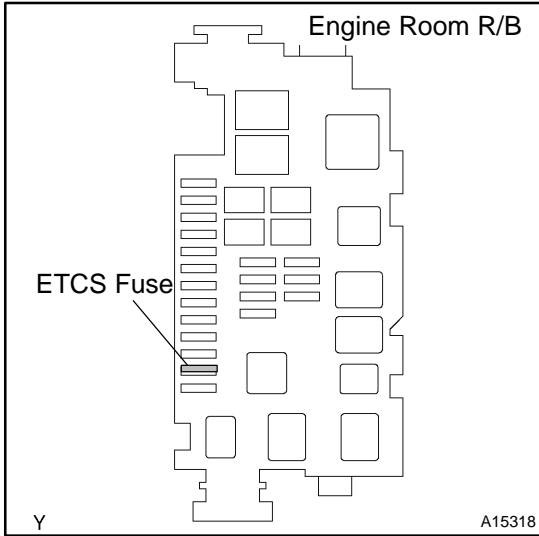


INSPECTION PROCEDURE

HINT:

Read freeze frame data using TOYOTA hand-held tester or OBD II scan tool. Because freeze frame records the engine conditions when the malfunction is detected. When troubleshooting it is useful for determining whether the vehicle was running or stopped, the engine was warmed up or not, the air-fuel ratio was lean or rich, etc. at the time of the malfunction.

1 Check ETCS fuse.



PREPARATION:

Remove the ETCS fuse from the engine room R/B.

CHECK:

Check the continuity of the ETCS fuse.

OK:

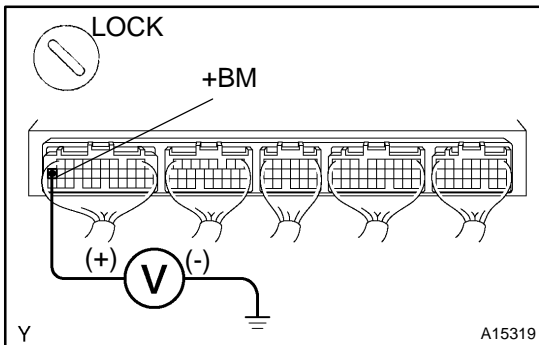
Continuity

NG

Check for short in all harness and components connected to ETCS fuse.

OK

2 Check voltage between terminal +BM of ECM connector and body ground.



PREPARATION:

Remove the glove compartment door.

CHECK:

Measure the voltage between terminal +BM of the ECM connector and body ground.

OK:

Voltage: 9 - 14 V

OK

Check and replace ECM (See page [IN-28](#)).

NG

Check and repair harness or connector between battery and ETCS fuse, and ETCS fuse and ECM (See page [IN-28](#)).